

## **ECASB**

**Guesses are submitted to Sue Summers at [ssummers@e1b.org](mailto:ssummers@e1b.org) by the end of each day.**

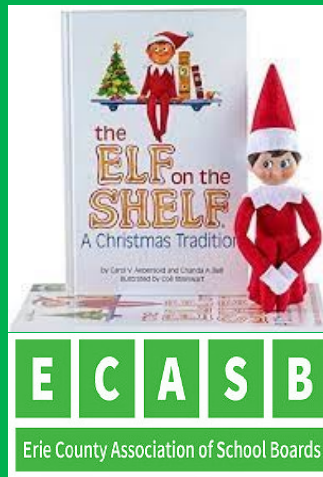
**Correct answers will put your name on the NICE list and into the final drawing.**

**The more times your name appears on the NICE list the more entries you will receive in the final drawing.**

**Dates of the Elf On A Shelf will be December 2nd - First Clue; - December 13th - Last Clue. The clues will be sent out Monday - Friday.**

**The first name drawn will receive a nice prize.  
A second name drawn will receive a \$100 Macy's Gift Card.  
A third name drawn will receive a \$50 Barnes and Noble gift card.**

**Prizes provided by:  
Image Model Management & Diamond Level Sponsor  
Black Passport Group & Platinum Level Sponsors:  
Bond, Schoeneck and King  
C & S Companies  
CSI  
Evans Bank  
Perma**



### **Clue Day 9:**

In Southern Erie and Cattaraugus lands,  
Where Buffalo Street meets history's hands,  
Stands a school of purple and gold,  
Its stories rich, its spirit bold.

The Griffins soar, both fierce and wise,  
Under Western New York skies.  
With every cheer and game-day roar,  
They guard traditions we all adore.  
The fields recall a coach renowned,  
Pop Warner's legacy, firmly crowned.  
His lessons echo through the years,  
Inspiring dreams, erasing fears.

Route 219 brings hearts anew,  
To halls where knowledge sparks and grew.  
So here's to the Griffins, strong and free,

*What district did E.C. Asby visit last evening?  
Submit your answer to Sue Summers at [ssummers@e1b.org](mailto:ssummers@e1b.org).*



**YESTERDAYS ANSWER: Gowanda CSD**