

ECASB

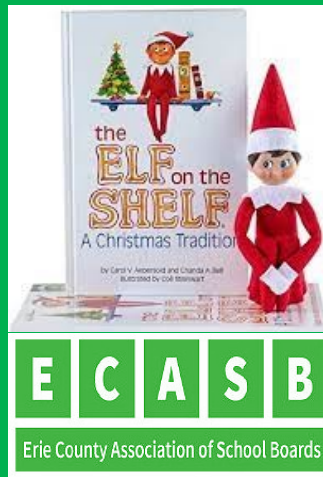
Guesses are submitted to Sue Summers at ssummers@e1b.org by the end of each day.

Correct answers will put your name on the NICE list and into the final drawing. The more times your name appears on the NICE list the more entries you will receive in the final drawing.

Dates of the Elf On A Shelf will be December 2nd - First Clue; - December 13th - Last Clue. The clues will be sent out Monday - Friday.

**The first name drawn will receive a nice prize.
A second name drawn will receive a \$100 Macy's Gift Card.
A third name drawn will receive a \$50 Barnes and Noble gift card.**

**Prizes provided by:
Image Model Management & Diamond Level Sponsor
Black Passport Group & Platinum Level Sponsors:
Bond, Schoeneck and King
C & S Companies
CSI
Evans Bank
Perma**



Clue Day 5:

In a village In the heart of the Southtowns, where pride takes its flight,
Stand the bold hues of maroon and white.
A banner of courage, a symbol so true,
For the Quakers who strive in all that they do.

A district that blossoms, suburban yet grand,
Shaped by the will of a diligent hand.
Usually ranked near the top, Business First proclaims,
A testament carved in academic flames.

Maroon for the passion, white for the light,
Together they shine, a guiding sight.

Through seasons of triumph, of challenge, of cheer,
The Quakers march on, unshaken by fear.

So here's to the Quakers, to their journey and might,
Forever united in maroon and white.

What district did E.C. Asby visit last evening?

Submit your answer to Sue Summers at ssummers@e1b.org.



YESTERDAYS ANSWER: Alden CSD