

ECASB

Guesses are submitted to Sue Summers at ssummers@e1b.org by the end of each day.

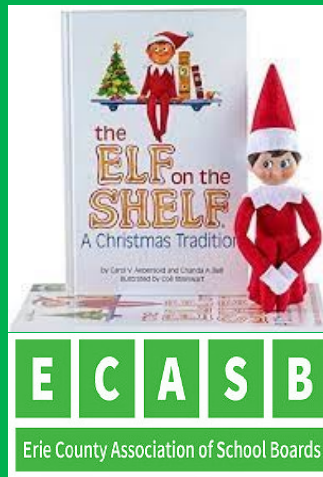
Correct answers will put your name on the NICE list and into the final drawing.

The more times your name appears on the NICE list the more entries you will receive in the final drawing.

Dates of the Elf On A Shelf will be December 2nd - First Clue; - December 13th - Last Clue. The clues will be sent out Monday - Friday.

**The first name drawn will receive a nice prize.
A second name drawn will receive a \$100 Macy's Gift Card.
A third name drawn will receive a \$50 Barnes and Noble gift card.**

**Prizes provided by:
Image Model Management & Diamond Level Sponsor
Black Passport Group & Platinum Level Sponsors:
Bond, Schoeneck and King
C & S Companies
CSI
Evans Bank
Perma**



Clue Day 8:

Through Collins and North Collins, Hanover's steadfast air,
Persia and Perrysburg, their spirit everywhere.

In Dayton's rolling meadows and Cattaraugus' land,
The Panther prowls with purpose, its legacy so grand.

On the Territory's sacred soil, roots run deep and wide,
A blend of past and future, in strength and Panther pride.

The rural school, a haven where community takes hold,
Where lessons taught with kindness are worth far more than gold.

From Erie 2 CC BOCES comes a bond that won't unbind,
A shared pursuit of knowledge, for body, heart, and mind

Across Erie, Chautauqua and Cattaraugus counties, through every town and field,
The bonds of learning strengthen, the heart of youth revealed.

***What district did E.C. Asby visit last evening?
Submit your answer to Sue Summers at ssummers@e1b.org.***



YESTERDAYS ANSWER: Cheektowaga Sloan UFSD