

ECASB

Guesses are submitted to Sue Summers at ssummers@e1b.org by the end of each day.

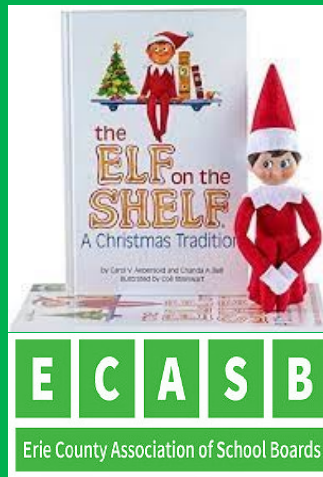
Correct answers will put your name on the NICE list and into the final drawing.

The more times your name appears on the NICE list the more entries you will receive in the final drawing.

Dates of the Elf On A Shelf will be December 2nd - First Clue; - December 13th - Last Clue. The clues will be sent out Monday - Friday.

The first name drawn will receive a nice prize.
A second name drawn will receive a \$100 Macy's Gift Card.
A third name drawn will receive a \$50 Barnes and Noble gift card.

Prizes provided by:
Image Model Management & Diamond Level Sponsor
Black Passport Group & Platinum Level Sponsors:
Bond, Schoeneck and King
C & S Companies
CSI
Evans Bank
Perma



Clue Day 3:

An eagle soars above the noble crest,
A symbol of striving, of being their best.

Beneath the skies, along the shore,
Native Americans are part of their core.

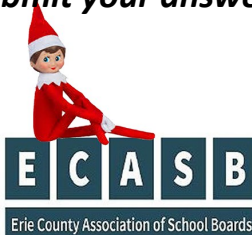
Zero-emission buses glide,
Clean and green, a district's pride.

In Erie 2 CC BOCES, they are a part,
A community built with passion and heart.

So here's to the District a beacon bright,
In green and white, an inspiring sight.

What district did E.C. Asby visit last evening?

Submit your answer to Sue Summers at ssummers@e1b.org.



YESTERDAYS ANSWER: Lancaster Central School District.